

# Parent Engagement Session 2023

## Primary 5



**VISION:** *Self-Directed Learners, Serving Leaders, Concerned Citizens*

**MISSION:** *To nurture and empower achievers who Strive, Lead and Serve, anchored on values*

# Housekeeping



- Please remain in mute mode throughout the presentation.
- Please key in questions that you have using the QR code.

<https://forms.gle/3uae8djs7Mv1ZGAc8>



# Programme



Time	Activity
2.30 p.m.	Principal's Address
2.45 p.m.	Sharing by Year Head
3.15 p.m.	Interaction with Form Teachers





# P5 Sharing

*Mrs Michelle Sim*  
Year Head



# Our Goals @Dazhong



## Holistic Development



**Empowering  
and Engaging  
Staff**



**Strong  
Partnerships**



# Our Goals @Dazhong



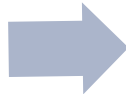
Self-directedness



**Success  
Criteria**



Serving heart of a leader



**Strong start**  
to their  
choice  
secondary  
school.



Concern for  
issues in the  
community  
and nation



# Our School Values



**I**

- **Integrity**

**R**

- **Responsibility**

**E**

- **Excellence**

**A**

- **Acceptance**

**P**

- **Perseverance**





# Learning For Life Programme (LLP)



Visual Arts



String Ensemble



Speech & Drama



Dance





# Applied Learning Programme (ALP)

## GREEN MAKERS @ DAZHONG

AN APPLIED LEARNING PROGRAMME (ALP)



### WHAT IS A GREEN MAKER?

Sustainability-themed with the Maker-centred approach (Design Thinking)

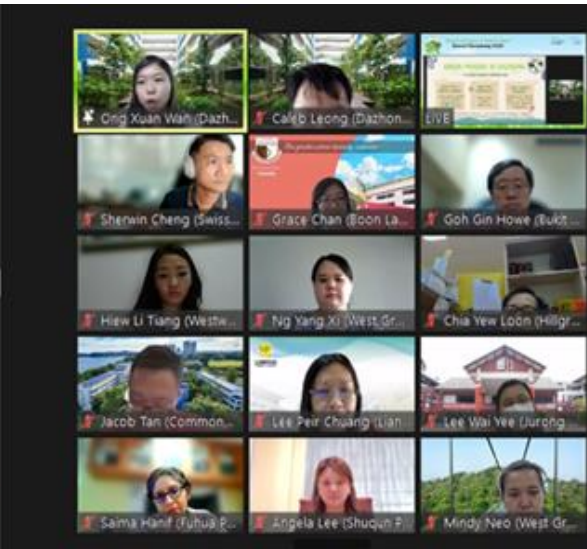
### OUR 3AS APPROACH

Awareness  
Action  
Advocacy

### OUR GREEN MANTRA

Making our future green - from home, in school and for Singapore!

We want our Green Makers to be **Aware** of the environmental challenges in Singapore, take **Actions** by coming up with green solutions and **Advocating** for others to do likewise.



## Green Makers@Dazhong

**1 DISCOVER**  
Investigate the problem by gathering information and conducting research.

**2 DEFINE**  
Understand the problem and come up with a plan.

**3 DEVELOP**  
Derive a solution and come up with a prototype to solve the problem.

**4 DARE, DESIGN, DELIVER!**  
Test out the prototype and improve it further! Be creative and persevere to come up with the best solution!

**FINALLY**

**DAZHONG - SOARING BEYOND LIMITS, SERVING BEYOND SELF**



spotlight > GREEN SCHOOLS @ SOUTH WEST

## My environment, my responsibility

35 SCHOOLS WERE RECOGNISED FOR THEIR ACTIVE PARTICIPATION IN GREEN SCHOOLS @ SOUTH WEST.

**EARNING TO BE RESPONSIBLE FOR OUR ENVIRONMENT STARTS FROM YOUNG, AND SOME 35,000 STUDENTS DEVELOP THIS SENSE OF OWNERSHIP THROUGH GREEN SCHOOLS @ SOUTH WEST EVERY YEAR.** Organised by the South West Community Development Council (CDC) and supported by the National Environment Agency (NEA), the programme engages students from primary and secondary schools in South West District on environmental issues through a series of talks and activities.

**HOW THE PROGRAMME WORKS**  
Under the Green Schools @ South West 2021 Accreditation Programme, participating schools are encouraged to complete activities such as organising recycling drives. These activities fall into three categories — Public Health, Environment Protection and Junior Environment Ambassador (JEA) — and schools are awarded a star for each accomplished category. To earn a JEA Star, a school must enroll 10 students for the JEA camp. The annual camp groups students to become role models by equipping them with both environmental and leadership skills to guide their peers. Over 230 students from 21 schools were trained through the camp in 2021.

**RECOGNISING THE EFFORTS PUT IN BY SCHOOLS**  
On 18 March 2022, close to 80 teachers and principals of schools who participated in Green Schools @ South West 2021 gathered online for the Green Schools @ South West Award Ceremony 2022 to celebrate their efforts in promoting environmental awareness. 27



Students who are busy with their Green Makers projects at Dazhong Primary School are also busy with their Green Schools projects.



Students from Dazhong Primary School are busy with their Green Makers projects and their participation in the Green Schools award ceremony.

Said Mr Zulkarnain Abdul Rahim, Vice-Chairman of South West Community Development Council (CDC) and Advisor to Chia Chee Kang GRC GRCs (Kang Hong), who presented the awards, "We hope to support teachers with activities and resources to educate, enrich and empower the students with not only greater environmental awareness and knowledge but also with leadership skills and the ability to lead and advocate environmental sustainability for their peers and the community."

For the award recipient and winner of the South West CDC's Sustainable South West Awards 2021, Dazhong Primary School, the ceremony was especially

memorable as teacher representative Ma Qing Xuan Wan presented what her students had learnt through the programme. Through the 3 As Approach (Awareness, Action, Advocacy), Dazhong Primary School has built a community of "Green Makers" who take the initiative to come up with green solutions and encourage their peers and families to do the same. For example, during the course of the year, students from the school's GreenTech Club came up with a multiplayer card game — named *Environment*, a hit on Roblox — which allows both students and their families to discover facts and tips on waste issues in Singapore. 22



A group of Dazhong Primary School and Primary One students from Dazhong Primary School participated in a recycling drive, where they had to come up with ideas and create posters using public bins, stumps, newspaper and using sticks.



# P5 Level Programmes



Type	Programme	Details
Academic Support	Targeted Remediation (TR)	<ul style="list-style-type: none"> <li>• Every Monday and Friday, 2.10 pm to 3.10 pm</li> <li>• For <b>selected</b> P5 students</li> <li>• Starting in Term 2</li> </ul>
Department	English Fiesta	<ul style="list-style-type: none"> <li>• 13 April Stories Come Alive!</li> </ul>
	ALP	<ul style="list-style-type: none"> <li>• Applied Learning Programme - from T1</li> </ul>
	P5 Camp	<ul style="list-style-type: none"> <li>• 16-18 March @ Jalan Bahtera</li> </ul>
	Math	<ul style="list-style-type: none"> <li>• PATHS Package (for selected students)</li> <li>• E2K (for selected students)</li> </ul>
CCE	NE Show	<ul style="list-style-type: none"> <li>• July/August – TBC</li> </ul>
	Values-in-Action	<ul style="list-style-type: none"> <li>• VIA Project</li> </ul>
	Twinning Programme	<ul style="list-style-type: none"> <li>• e-Twinning Programme (for selected students)</li> </ul>

CHANGES TO



SCHOOL-BASED

ASSESSMENTS





# Removal of MYE - Nurturing Confident,

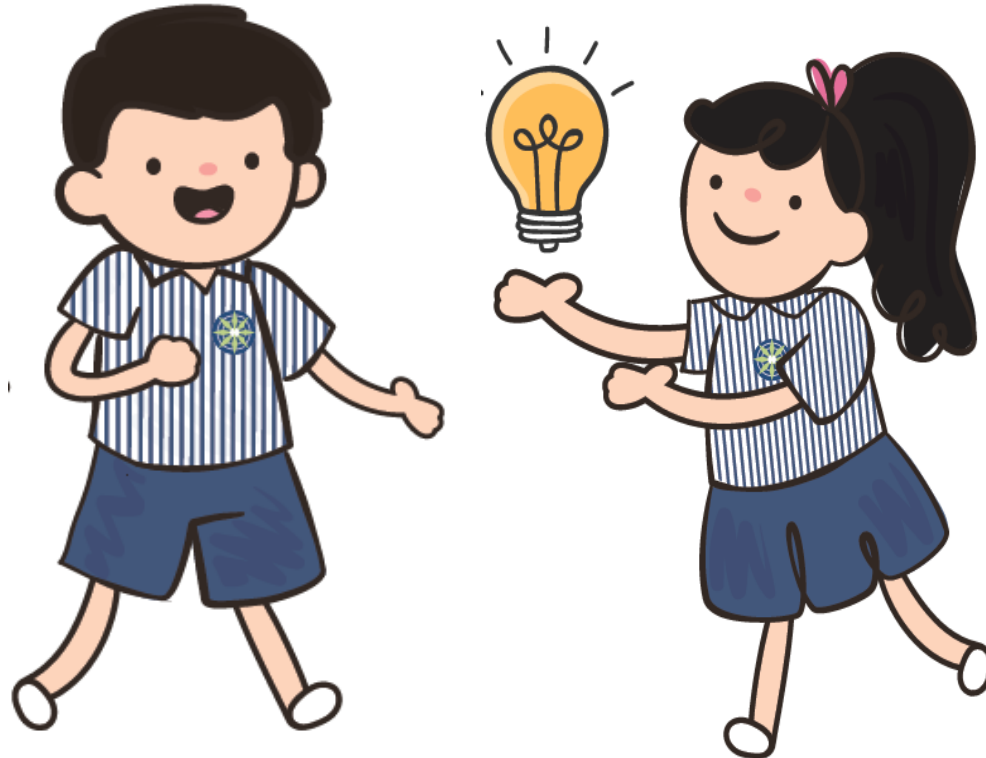
## Resilient Learners

### *Building Future-Ready Competencies*

- To give more time and space for students to further develop their 21st Century Competencies and engage in more student-initiated learning, mid-year examinations for all primary and secondary levels will be removed by 2023.
- In line with efforts to shift away from an over-emphasis on examinations, and nurture an intrinsic joy of learning.



# How can I support my child? ❤️



# Parenting Tips to Boost your Child's Mental Wellbeing



1. **Spend time together: Be attentive to what they say**
2. **Be generous with praise: Focus on their strengths**
3. **Discipline without labelling**
4. **Have realistic expectations**
5. **Practise positive thinking**





# Parenting Tips to Boost your Child's Mental Wellbeing



**6. Encourage your child to build meaningful friendships**

**7. Reduce stress together:**

- **Encourage physical activity**
- **Be a positive role model**





# **Briefing on PSLE Scoring, Secondary One (S1) Posting & Direct School Admissions (DSA)**



# HOW PSLE SCORING WORKS



Changes to the PSLE scoring and S1 posting

[What you need to know about the new PSLE scoring system](#)



# PSLE Scoring



Standard Level		Foundation Level	
AL	Raw Mark Range	Foundation Level AL Reflected on Result Slip	Foundation Level Raw Mark Range
1	$\geq 90$		
2	85 – 89		
3	80 – 84		
4	75 – 79		
5	65 – 74		
6	45 – 64	A	75 – 100
7	20 – 44	B	30 – 74
8	$< 20$	C	$< 30$

# FROM T-SCORE TO WIDER SCORING BANDS

- The PSLE Score replaces the T-score aggregate.
- It is obtained by adding the ALs of four subjects.
- The PSLE Score ranges from 4 to 32, with 4 being the best possible



ENGLISH	AL3
MOTHER TONGUE	AL2
MATHEMATICS	AL1
SCIENCE	AL2

---

**PSLE SCORE: 8**

# EXAMPLE: MARY (4S)

Mary's results:

SUBJECT	MARY'S RESULTS	AL?
English	57	6
Malay	70	5
Mathematics	76	4
Science	40	7

AL	RAW MARK RANGE
1	$\geq 90$
2	85 – 89
3	80 – 84
4	75 – 79
5	65 – 74
6	45 – 64
7	20 – 44
8	$< 20$

What is her PSLE score? 22

What stream will she be eligible for? Express/N(A) option

Confirm with KKH

PLACEMENT OUTCOME	PSLE SCORE
EXPRESS	4 – 20
EXPRESS / N(A) OPTION	21 – 22
N(A)	23 – 24
N(A) / N(T) option	25
N(T)	26-30, with AL7 or better in both EL <u>and</u> MA



# EXAMPLE 3: BILLY (4F)

Billy's results:

SUBJECT	TOM'S RESULTS	AL?
Foundation English	50	
Foundation Chinese	35	
Foundation Mathematics	18	
Foundation Science	24	

What is his PSLE score? Which stream will he be posted to?

Foundation Level AL Reflected on Result Slip	Foundation Raw Mark Range	Equivalent Standard Subject AL
A	75 – 100	6
B	30 – 74	7
C	< 30	8

PLACEMENT OUTCOME	PSLE SCORE
EXPRESS	4 – 20
EXPRESS / N(A) OPTION	21 – 22
N(A)	23 – 24
N(A) / N(T) option	25
N(T)	26-30, with AL7 or better in both EL <u>and</u> MA

# EXAMPLE 3: BILLY (4F)

Billy's results:

SUBJECT	TOM'S RESULTS	AL?
Foundation English	50	7
Foundation Chinese	35	7
Foundation Mathematics	18	8
Foundation Science	24	8

Foundation Level AL Reflected on Result Slip	Foundation Raw Mark Range	Equivalent Standard Subject AL
A	75 – 100	6
B	30 – 74	7
C	< 30	8

PLACEMENT OUTCOME	PSLE SCORE
EXPRESS	4 – 20
EXPRESS / N(A) OPTION	21 – 22
N(A)	23 – 24
N(A) / N(T) option	25
N(T)	26-30, with AL7 or better in both EL and MA

What is his PSLE score? 30

Billy scored AL8 for his Foundation Mathematics. will have the option of repeating or going to Northlight School/ Assumption Pathway School.

To progress to secondary school,  
a student will need to score:



- **20 marks or more** for **English** and **Mathematics** (above AL8)
- **30 marks or more** for **Foundation English** and **Foundation Mathematics** (above AL8)
- Total PSLE Score **30 and below**

Otherwise, the student will have the option of repeating P6 or going to Northlight School or Assumption Pathway School.

COS 2019

# Remaking Secondary School Pathways



Ministry of Education  
SINGAPORE

**Current** Secondary School Pathways

PSLE

Sec 4/Sec 5

Express course

O-Level Certificate

JC

N(A) course

N(A)-Level Certificate

Poly

N(T) course

N(T)-Level Certificate

ITE



**After Full SBB Implementation**

PSLE

Sec 4 in 2027

**One Secondary School Education, Many Subject Bands**

From 2024, at the start of Sec 1, students can take a combination of G1/2/3 (G is for General) subjects based on their PSLE scores, suited to their pace of learning. Thereafter, their subject levels will be based on their strengths and interests.

**One Common Certificate**  
Students will sit for the common national examination and receive a new national certification that reflects their G1/G2/G3 subjects.

In 2028, MOE will implement a new post-Secondary admissions system.

JC, Poly and ITE in 2028



Students will continue to be posted to Secondary schools across three scoring bands.



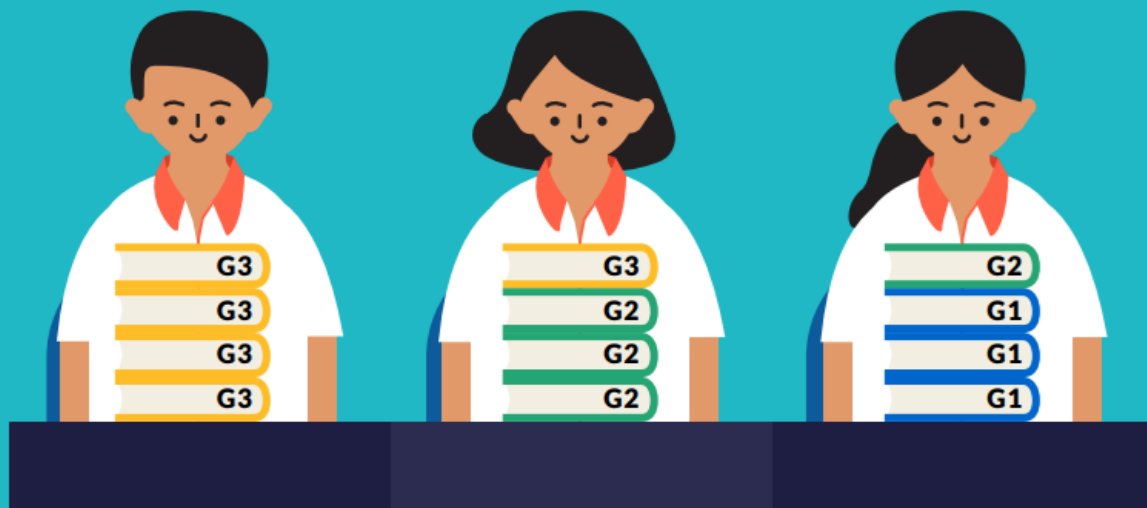


## One Secondary Education, Many Subject Bands

With Full SBB, students can take subjects at G1/G2/G3 academic levels, which are mapped from today's N(T)-, N(A)-, and O-Level subjects respectively.

### Start of Sec 1

Subject levels are assigned based on PSLE results

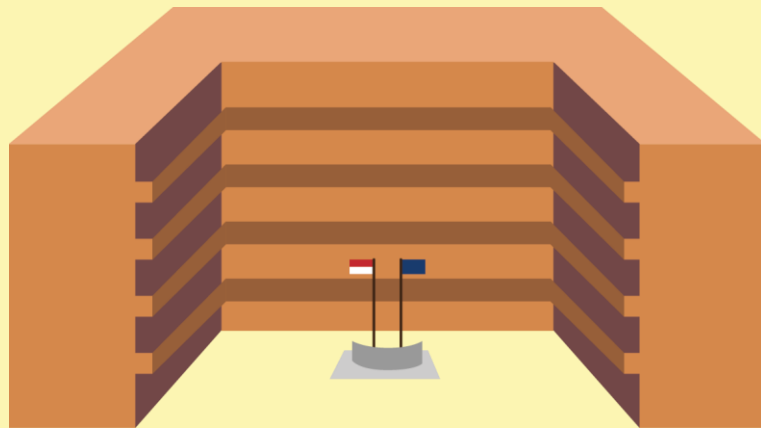


### Beyond Start of Sec 1

Subject levels depend on students' abilities



# HOW S1 POSTING WORKS



# CHOICE ORDER OF SCHOOLS WILL MATTER MORE

- **Students will continue to be posted to a secondary school based on academic merit i.e. overall PSLE score.**
- **If two or more students with the same PSLE Score vie for the last remaining place in a school, tie-breakers will be used in the following order:**
  - 1. CITIZENSHIP**
  - 2. CHOICE ORDER OF SCHOOL**  
**(New tie-breaker from 2021 onwards)**
  - 3. COMPUTERISED BALLOTING**



# Tie-breakers

## in the new S1 Posting System


Tie-breakers are used only if there are two or more students with the same PSLE Score vying for the last available place(s) in a school.

Here's a simplified example.

5 students are vying for the last places in the schools of their choice.


**Jane**  
Singapore Citizen  
16 pts

SCHOOL CHOICES:  
1) Sch A  
2) Sch ...  
3) Sch ...  
4) Sch ...




**Bryan**  
Singapore Citizen  
20 pts

SCHOOL CHOICES:  
1) Sch B  
2) Sch ...  
3) Sch ...  
4) Sch ...




**Mary**  
Singapore Citizen  
20 pts

SCHOOL CHOICES:  
1) Sch A  
2) Sch B  
3) Sch C  
4) Sch ...




**Alan**  
Permanent Resident  
20 pts

SCHOOL CHOICES:  
1) Sch A  
2) Sch B  
3) Sch D  
4) Sch ...




**Rina**  
Permanent Resident  
20 pts

SCHOOL CHOICES:  
1) Sch A  
2) Sch B  
3) Sch D  
4) Sch E



➤ Students with better scores will be posted first

Jane has a better PSLE score. She will be posted first, to **School A**.





➤ Tie-breaker #1: Citizenship

Bryan, Mary, Alan and Rina have the same score.

As Jane has taken the last available place in School A, Bryan, Mary, Alan and Rina will vie for the last available place in their next choice, **School B**.


Bryan and Mary are Singapore Citizens. They will have priority to enter **School B**.


Alan and Rina will be tie-broken out as they are Permanent Residents. They will be considered for their next choice, **School D**.

➤ Tie-breaker #2: Choice order of schools

Because Bryan ranked School B higher than Mary, he will be posted to **School B**.




Since Bryan has taken the last place in School B, Mary will be posted to **School C**.




Alan and Rina have both ranked School D as their third choice. They will go through computerised balloting to vie for the last remaining place in **School D**.

➤ Tie-breaker #3: Computerised balloting

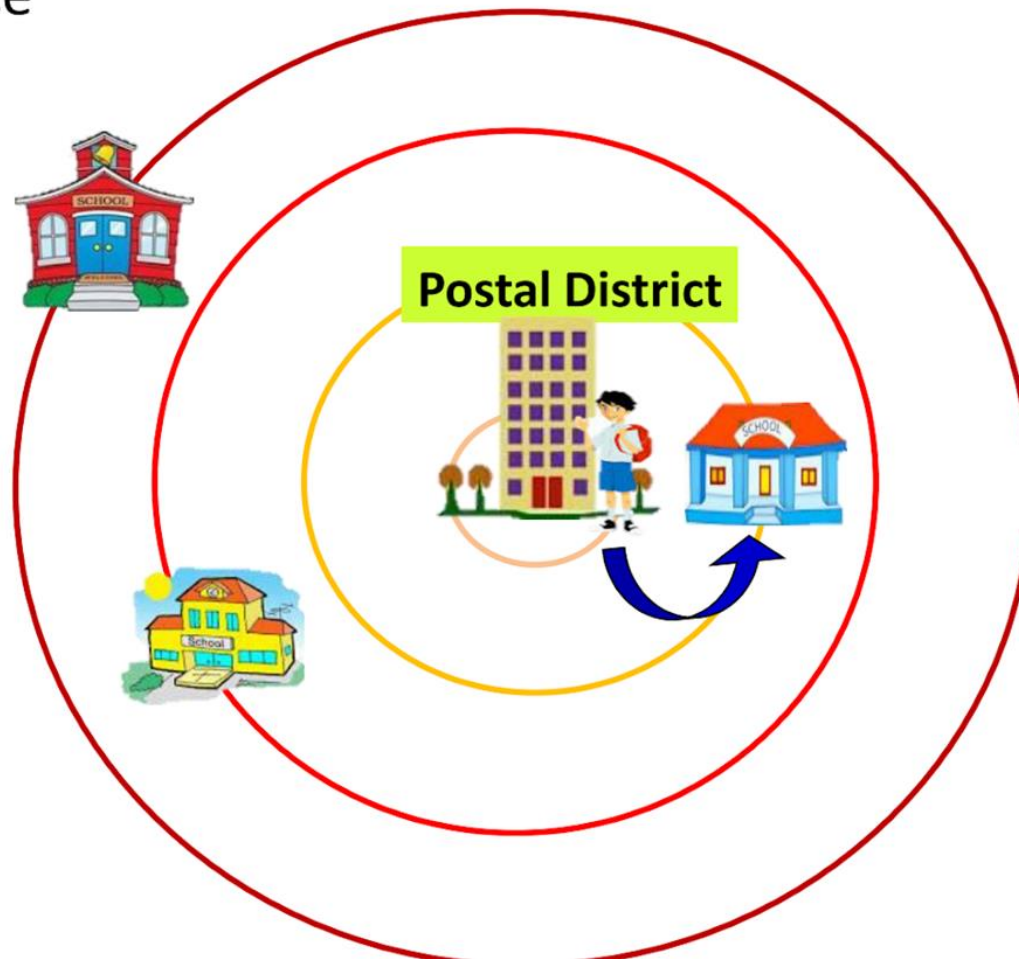
Through computerised balloting, Alan is posted to **School D**.



Since Alan has taken the last place in School D, Rina will be posted to her fourth choice, **School E**.



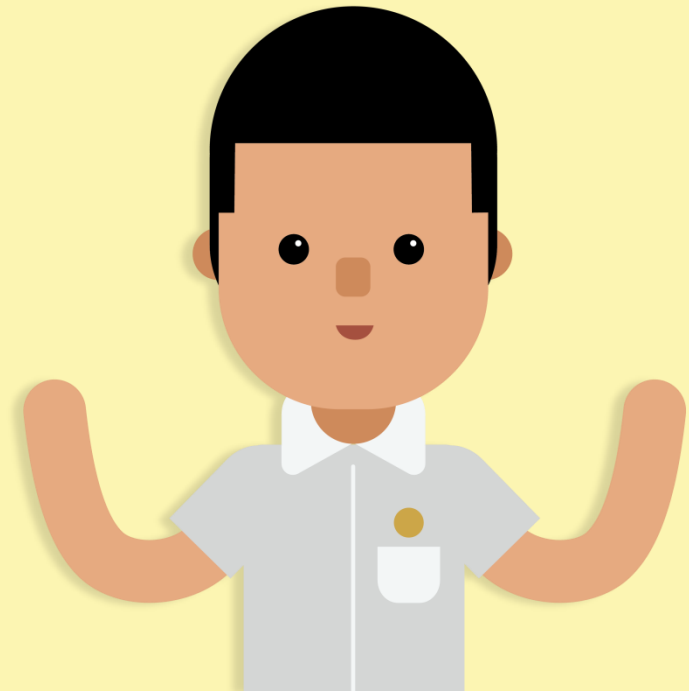
Any pupil who cannot get into any of his/her 6 choices will be posted to a secondary school that still has vacancies near his/her place of residence







# USE OF HCL FOR ADMISSION INTO SAP SCHOOLS

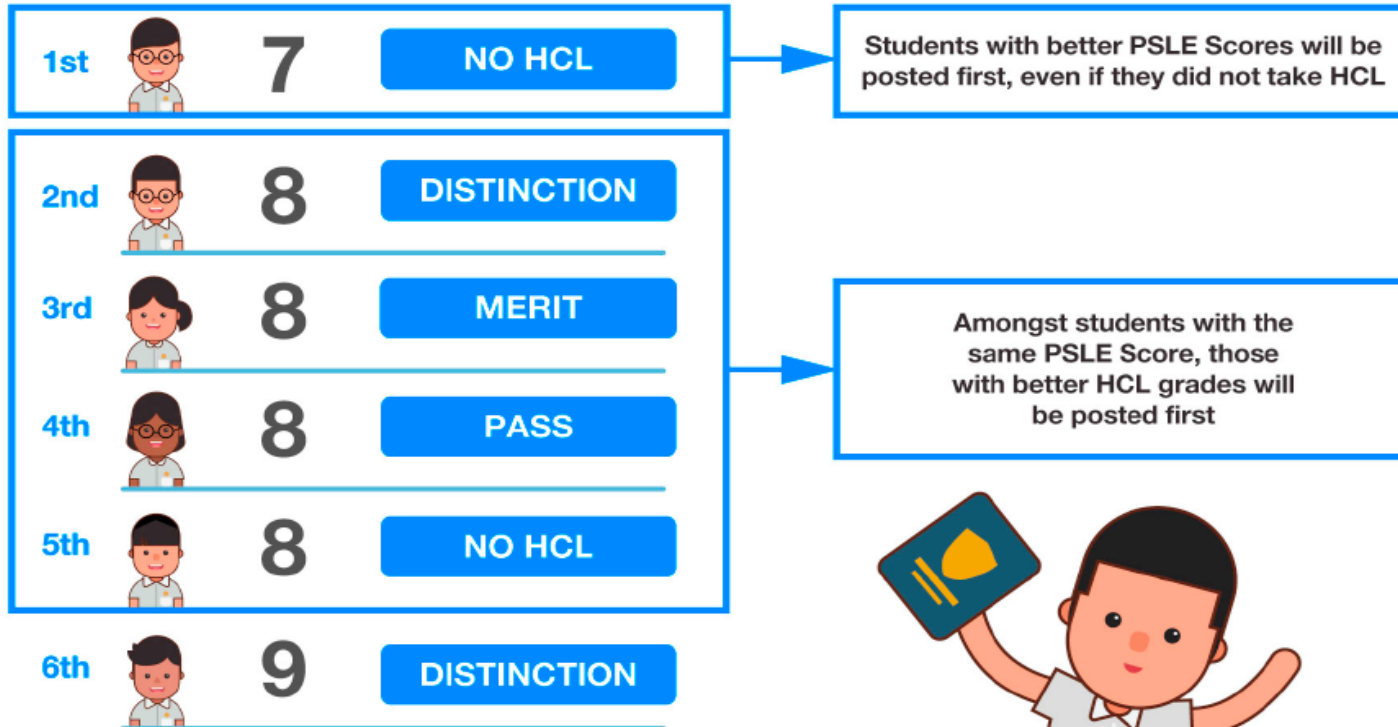


# EXAMPLE:

## Using HCL for Admission into SAP Schools

Students who take HCL will receive a posting advantage when applying to SAP schools

Students will be considered for admission to SAP schools in the following order:



# FIND OUT MORE ON THE PSLE-FSBB MICROSITE!



<https://go.gov.sg/pslefsbb>



# OTHER RESOURCES

1

**SchoolFinder Tool**

**SCHOOL FINDER**



<https://go.gov.sg/secschoofinder>

2

**“Welcome to Secondary School” video**



<https://go.gov.sg/welcome-to-secondary-school>

3

**Secondary School Education Booklet**



<https://go.gov.sg/psle-sec-sch-brochure>

4

**ECG Parent Guide**



<https://go.gov.sg/parent-guide>



# Direct School Admission for Secondary Schools





# Direct School Admission (DSA-Sec)



- ? To encourage different **peaks of excellence**
- ? DSA-Sec allows students to apply to some schools before taking PSLE.
- ? Students apply based on their **talent in sports, CCAs and specific academic areas.**
- ? If your child is admitted to a secondary school through DSA-Sec, they are not allowed to:
  - o Submit school choices during the Secondary 1 (S1) posting process.
  - o Transfer to another school. They must commit to their chosen school for the duration of the programme.



# Direct School Admission (DSA-Sec)



## Entering a secondary school



### PSLE/S1 Posting Process

- Based on a student's PSLE score
- Most students enter secondary schools this way



### DSA-Sec

- Based on a diverse range of talents and achievements in specific academic subjects or non-academic areas, beyond what the PSLE recognises
- Allows students to access school programmes to develop their talents



## Who can apply

- ? Primary 6 students can apply for DSA-Sec based on a wide range of talents, including:
  - Sports and games
  - Visual, literary and performing arts
  - Debate and public speaking
  - Science, mathematics and engineering
  - Languages and humanities
  - Uniformed groups
  - Leadership (for example, prefects)





## How to apply

- ? Students can apply through the centralised DSA-Sec portal. There are no application fees.

### Section I: Talent(s) and School(s)<sup>1</sup>

You can indicate up to 3 choices of talent areas and schools. The choice order does not matter.

Of the 3 choices, a maximum of 2 choices can be used to apply to the same school, for 2 different talent areas.

**Note:** If you have chosen a school offering both the Integrated Programme and O-Level Programme, the talent area(s) may be offered in both programmes. Please select the preferred programme, if applicable.

Talent	School	Select Programme (If applicable) (Please choose one only.)
		<input type="checkbox"/> Integrated Programme <input type="checkbox"/> O-Level Programme <input type="checkbox"/> No Preference
		<input type="checkbox"/> Integrated Programme <input type="checkbox"/> O-Level Programme <input type="checkbox"/> No Preference
		<input type="checkbox"/> Integrated Programme <input type="checkbox"/> O-Level Programme <input type="checkbox"/> No Preference

### Section II: Non-school-based Awards/Activities (Optional)

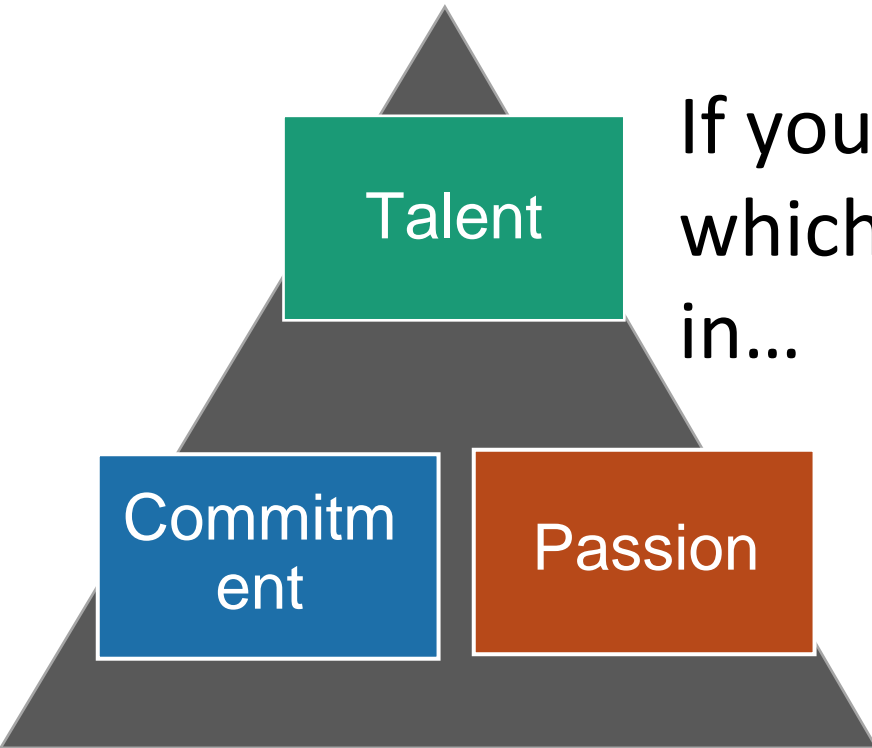




# Direct School Admission (DSA-Sec)



## Is the DSA-Sec right for my child?



If your child has specific **talents** which a school offers the DSA-Sec in...

And is **passionate** about and **committed** to developing his/her strengths and interests...

DSA-Sec can support his/her development in that talent area.



## Which school should my child apply to?

- ? Look for a school with **programmes that match your child's strengths and interests**
  - Learn more about the secondary school's **pace of learning** and overall range of programmes
- ? **Get the latest information** about what each school offers by:
  - Visiting schools' websites
  - Attending schools' Open Houses to also experience their environments and cultures
  - Visiting the MOE's DSA-Sec website



# USEFUL WEBSITES



- **MOE DSA Website:**  
<https://www.moe.gov.sg/secondary/dsa/>
- **My SkillsFuture for Primary School students:**  
<https://www.myskillsfuture.gov.sg/content/student/en/primary/about/myskillsfuture-for-students.html>

# Channels of Communication



- ❑ **Parents Gateway**
- ❑ Termly newsletter
- ❑ School calendar
- ❑ Student Handbook
- ❑ School website: <http://dazhongpri.moe.edu.sg/>
- ❑ Telephone: 6565 8002
- ❑ School email: [dazhong\\_ps@moe.edu.sg](mailto:dazhong_ps@moe.edu.sg)
- ❑ Teacher's email address (found on school website)
- ❑ YH email address: [Loh\\_Jee\\_Yan@moe.edu.sg](mailto:Loh_Jee_Yan@moe.edu.sg)
- ❑ Parent-Teacher Meetings



# Questions?



Please key in questions that you have using the QR code.

<https://forms.gle/3uae8djs7Mv1ZGAc8>





# Thank You!



EST. 1938

