

Parent Engagement Session 2023

Primary 6



DAZHONG
PRIMARY SCHOOL
With Pride We Excel

VISION: *Self-Directed Learners, Serving Leaders, Concerned Citizens*

MISSION: *To nurture and empower achievers who Strive, Lead and Serve, anchored on values*

Housekeeping



- Kindly remain in mute mode throughout the presentation.
- Please key in questions that you have using the QR code.

<https://forms.gle/3uae8djs7Mv1ZGAc8>



Programme



Time	Activity
2.30 p.m.	Principal's Address
2.45 p.m.	Sharing by Vice – Principal
3.15 p.m.	Interaction with Form Teachers



Our Goals @Dazhong



Holistic Development



Empowering and Engaging Staff



Strong Partnerships



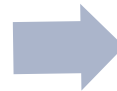
Our Goals @Dazhong



Self directedness



Serving heart of a leader



Concern for issues in the community and nation



Strong start
to their choice
secondary
school.



Our School Values



I

- **Integrity**

R

- **Responsibility**

E

- **Excellence**

A

- **Acceptance**

P

- **Perseverance**



Learning For Life Programme (LLP)



Visual Arts



String Ensemble



Speech & Drama



Dance



Applied Learning Programme (ALP)

GREEN MAKERS @ DAZHONG

AN APPLIED LEARNING PROGRAMME (ALP)

WHAT IS A GREEN MAKER?

Sustainability-themed with the Maker-centred approach (Design Thinking)

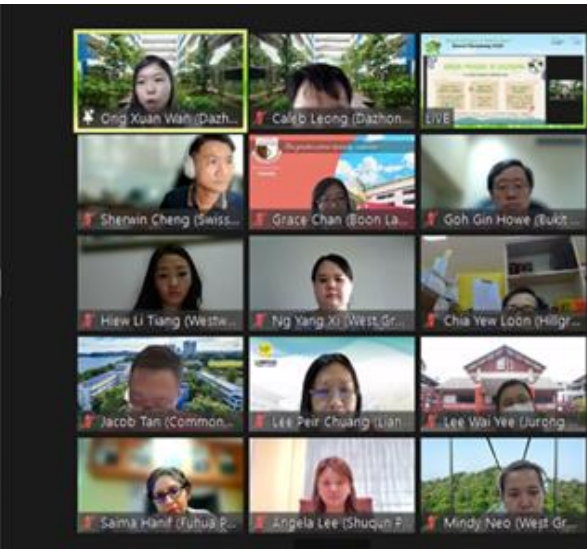
OUR 3AS APPROACH

Awareness
Action
Advocacy

OUR GREEN MANTRA

Making our future green - from home, in school and for Singapore!

We want our Green Makers to be **Aware** of the environmental challenges in Singapore, take **Actions** by coming up with green solutions and **Advocating** for others to do likewise.



Green Makers@Dazhong

1 DISCOVER
Investigate the problem by gathering information and conducting research.

2 DEFINE
Understand the problem and come up with a plan.

3 DEVELOP
Derive a solution and come up with a prototype to solve the problem.

4 DARE, DESIGN, DELIVER!
Test out the prototype and improve it further! Be creative and persevere to come up with the best solution!

FINALLY

WE ARE GREEN MAKERS!
WE ARE HEADS OF HEARTS TO OUR HAVO!

DAZHONG - SOARING BEYOND LIMITS! SERVING BEYOND SELF!

spotlight > GREEN SCHOOLS @ SOUTH WEST

My environment, my responsibility

35 SCHOOLS WERE RECOGNISED FOR THEIR ACTIVE PARTICIPATION IN GREEN SCHOOLS @ SOUTH WEST.

EARNING TO BE RESPONSIBLE FOR OUR ENVIRONMENT STARTS FROM YOUNG, AND SOME 35,000 STUDENTS DEVELOP THIS SENSE OF OWNERSHIP THROUGH GREEN SCHOOLS @ SOUTH WEST EVERY YEAR.

Organised by the South West Community Development Council (CDC) and supported by the National Environment Agency (NEA), the programme engages students from primary and secondary schools in South West District on environmental issues through a series of talks and activities.

HOW THE PROGRAMME WORKS

Under the Green Schools @ South West 2021 Accreditation Programme, participating schools are encouraged to complete activities such as organising recycling drives. These activities fall into three categories — Public Health, Environment Protection and Junior Environment Ambassador (JEA) — and schools are awarded a star for each accomplished category. To earn a JEA Star, a school must enroll 10 students for the JEA camp. The annual camp groups students to become role models by equipping them with both environmental and leadership skills to guide their peers. Over 230 students from 21 schools were trained through the camp in 2021.

RECOGNISING THE EFFORTS PUT IN BY SCHOOLS

On 18 March 2022, close to 80 teachers and principals of schools who participated in Green Schools @ South West 2021 gathered online for the Green Schools @ South West 2021 Award Ceremony 2022 to celebrate their efforts in promoting environmental awareness. 27



Students who are busy with their Green Schools activities at South West District Primary School are seen participating in the 'Trashy' games.



Students from the Green Schools @ South West District Primary School are seen participating in the 'Trashy' games.

Said Mr Zulkarnain Abdul Rahim, Vice-Chairman of South West Community Development Council (CDC) and Advisor to Chia Chee Kang GRC GRCs (Kang Hong), who presented the awards, "We hope to support teachers with activities and resources to educate, enrich and empower the students with not only greater environmental awareness and knowledge but also with leadership skills and the ability to lead and advocate environmental sustainability for their peers and the community."

For the award recipient and winner of the South West CDC's Sustainable South West Awards 2021, Dazhong Primary School, the ceremony was especially

memorable as teacher representative Ma Qing Xuan Wan presented what her students had learnt through the programme. Through the 3 As Approach (Awareness, Action, Advocacy), Dazhong Primary School has built a community of "Green Makers" who take the initiative to come up with green solutions and encourage their peers and families to do the same. For example, during the course of the year, students from the school's GreenTech Club came up with a multiplayer card game — named *Environment*, a hit on Roblox — which allows both students and their families to discover facts and tips on waste issues in Singapore. 2



A group of Dazhong Primary School students and their teacher, Ma Qing Xuan Wan, are seen participating in a recycling drive. They have been organising and participating in various public jobs, drives, campaigns and using tools.



Key Level Programmes



- Motivational Talks
- Learning Journey to Indian Heritage Centre
- Direct School Admissions
- Education and Career Guidance (ECG) Career Fair
- Values-in-Action
- P6 Transition Programme (post-PSLE)
- P6 Graduation



CHANGES TO



SCHOOL-BASED

ASSESSMENTS



Removal of MYE - Nurturing Confident, Resilient Learners

Building Future-Ready Competencies

- To give more time and space for students to further develop their 21st Century Competencies and engage in more student-initiated learning, mid-year examinations for all primary and secondary levels will be removed by 2023.
- In line with efforts to shift away from an over-emphasis on examinations, and nurture an intrinsic joy of learning.



Academic Support Programmes



Programme	Details
1. Extended Curriculum (EC)	<ul style="list-style-type: none">• Every Monday and Friday, 2.10 pm to 4.10 pm• For ALL P6 students• Term 1
2. Targeted Remediation	<ul style="list-style-type: none">• Every Monday and Friday, 2.10 pm to 4.10 pm• For selected P6 students• Term 2 onwards
3. Terrific Tuesdays	<ul style="list-style-type: none">• Every Tuesday, 7.40 a.m. to 9.40 a.m.• For ALL P6 students• Starting in Term 3
4. Additional academic support during the school holidays	<ul style="list-style-type: none">• Mar: Thurs, Fri (selected students)• June: Last week of June, Wed to Fri• Sep: Wed to Fri📅 More details to come





Mr Koh Kah Hock

Vice-Principal



Are you a **P.S.L.E** Parent?



Parent Kit

Missed our
last issue?

Click [here](#) for our
previous Parent Kits.



Ministry of Education
SINGAPORE



PSLE Scoring, Secondary One Posting & Full Subject-based Banding



PSLE Scoring



Standard Level		Foundation Level	
AL	Raw Mark Range	Foundation Level AL Reflected on Result Slip	Foundation Level Raw Mark Range
1	≥ 90		
2	85 – 89		
3	80 – 84		
4	75 – 79		
5	65 – 74		
6	45 – 64	A	75 – 100
7	20 – 44	B	30 – 74
8	< 20	C	< 30

PSLE Scoring



- PSLE overall score is obtained by adding the ALs of four subjects.
- From 2024, the **Express, N(A) and N(T) courses will be removed** and replaced with 3 scoring bands*

ENGLISH	AL3
MOTHER TONGUE	AL2
MATHEMATICS	AL1
SCIENCE	AL2

PSLE SCORE: 8

PLACEMENT OUTCOME*	PSLE SCORE
EXPRESS	4 – 20
EXPRESS / N(A) OPTION	21 – 22
N(A)	23 – 24
N(A) / N(T) option	25
N(T)	26-30, with AL7 or better in both EL and MA



To progress to secondary school, a student will need to:

1. Achieve a PSLE Overall Score of **30 and below**; and
1. Score **at least AL7** for **both English and Mathematics**
 - 20 marks or more for Standard English and Mathematics
 - 30 marks or more for Foundation English and Foundation Mathematics

Otherwise, the student will have the option of repeating P6 or going to Northlight School or Assumption Pathway School.

PSLE Scoring



Billy's results:

SUBJECT	Billy's RESULTS	AL
Foundation English	50	7
Foundation Chinese	35	7
Foundation Mathematics	18	8
Foundation Science	24	8

Total PSLE score? **30**

Billy scored AL8 for his Foundation Mathematics.

He will have the option of **repeating Primary 6**, or going to **Northlight School** or **Assumption Pathway School**.



Choosing a Secondary School



PSLE/S1 Posting Process

Direct School Admission (DSA)

- Based on a student's **PSLE score**
- Most students enter secondary schools this way

- Based on a diverse range of **talents and achievements in specific academic subjects or non-academic areas**, beyond what the PSLE recognises
- Allows students to access school programmes to develop their talents



Choosing a Secondary School



A SECONDARY SCHOOL THAT'S SUITABLE FOR YOUR CHILD

Help them match the school to their strengths and interests.



ASK:

What are their strengths, interests, and abilities?

- What kind of courses, programmes and opportunities will develop these?
- Will the pace of learning be suitable for them?



CONSIDER:

- School Culture
- Courses
- Programmes, Subjects and CCAs Offered
- Location and Transport
- If your child has Special Educational Needs

Select schools with specialised facilities or resources.



Choosing a Secondary School



SchoolFinder

CourseFinder

Academic calendar

Quick links

♥ My shortlisted (0)



Ministry of Education
SINGAPORE

Education levels ▾ Financial matters ▾ Education in SG ▾ News Careers About MOE



MOE > SCHOOLFINDER >

Last Updated: 30 May 2022

🔗 [How to use SchoolFinder](#)

SchoolFinder

Explore schools based on their distance from your home, locations, CCAs, subjects and programmes offered.

<https://www.moe.gov.sg/schoolfinder?journey=Secondary%20school>



Choosing a Secondary School



Criteria

Clear all

Location

Search for schools near you

Enter your postal code

Clear

OR

Search for schools by area

Bukit Batok

Admission type

Direct School Admission (DSA)

Co-curricular activities (CCAs)

Subjects

Electives and programmes

PSLE score range of 2021

Support for special educational needs

School type

Secondary schools

← 1 of 1 →

Showing 5 Secondary schools

Area: Bukit Batok X

Bukit Batok Secondary School

Bukit Batok
50 Bukit Batok West Ave 8, S658962



Bukit View Secondary School

Bukit Batok
16 Bukit Batok Street 21, S659633



Dunearn Secondary School

Bukit Batok
21 Bukit Batok West Avenue 2, S659204



Hillgrove Secondary School

Bukit Batok
10 Bukit Batok Street 52, S659250



Swiss Cottage Secondary School



Choosing a Secondary School

Secondary School



PSLE score range of 2021

	Affiliated	Non-affiliated
Express	-	14 - 21
Normal Academic	-	21 - 24
Normal Technical	-	25 - 28

Subjects offered

Electives and programmes

DSA talent areas offered in 2022

Co-Curricular Activities (CCAs)

Support for special educational needs

Choosing a Secondary School



- Fill in all **6** school options
- Select your preferred school **higher** in your order of choices
- Select schools with a **broader range** of Cut-Off scores
 - School scores ranges in Schoolfinder are only **indicative!**



Secondary 1 Posting



- Students will continue to be posted to a secondary school based on academic merit i.e. PSLE overall score.
- If two or more students with the **same PSLE Score** vie for the **last remaining place** in a school, **tie-breakers** will be used in the following order:
 1. **CITIZENSHIP**
 2. **CHOICE ORDER OF SCHOOL**
 3. **COMPUTERISED BALLOTING**



Secondary 1 Posting



Tie-breakers in the new S1 Posting System

Tie-breakers are used only if there is more than one student with the same PSLE score vying for the last available place in a school. Here's a simplified example.

5 students are vying for the last places in the schools of their choice.

Jane

Singapore Citizen
16 pts

SCHOOL CHOICES:
1) Sch A
2) Sch ...
3) Sch ...
4) Sch ...



Bryan

Singapore Citizen
20 pts

SCHOOL CHOICES:
1) Sch B
2) Sch ...
3) Sch ...
4) Sch ...



Mary

Singapore Citizen
20 pts

SCHOOL CHOICES:
1) Sch A
2) Sch B
3) Sch C
4) Sch ...



Alan

Permanent Resident
20 pts

SCHOOL CHOICES:
1) Sch A
2) Sch B
3) Sch D
4) Sch ...



Rina

Permanent Resident
20 pts

SCHOOL CHOICES:
1) Sch A
2) Sch B
3) Sch D
4) Sch E



Students with better scores will be posted first

Jane has a better PSLE score. She will be posted first, to **School A**.

Bryan, Mary, Alan and Rina have the same score.
As Jane has taken the last available place in School A, Bryan, Mary, Alan and Rina will vie for the last available place in their next choice, **School B**.

Tie-breaker #1: Citizenship

Bryan and Mary are Singapore Citizens. They will have priority to enter **School B**.

Alan and Rina will be tie-broken out as they are Permanent Residents. They will be considered for their next choice, **School D**.

Tie-breaker #2: Choice order of schools

Because Bryan ranked School B higher than Mary, he will be posted to **School B**.

Since Bryan has taken the last place in School B, Mary will be posted to **School C**.

Alan and Rina have both ranked School D as their third choice. They will go through computerised balloting to vie for the last remaining place in **School D**.

Tie-breaker #3: Computerised balloting

Through computerised balloting, Alan is posted to **School D**.

Since Alan has taken the last place in School D, Rina will be posted to her fourth choice, **School E**.

Full Subject-based Banding (Full SBB)



With Full SBB in all secondary schools in 2024, students will have greater flexibility to **study more subjects at different levels** that suit their interests, aptitude and learning needs. There will **no longer be separate Express, N(A), and N(T) courses**, and students will be in **mixed form classes** where they can interact with peers of different strengths and interests.



Full Subject-based Banding (Full SBB)



All secondary school students can offer **English Language, Mother Tongue Languages, Mathematics and Science** at a more demanding level from the start of Secondary One based on students' PSLE Achievement Level (AL) for each subject.

Peter



ENGLISH LANGUAGE	AL 6
------------------	------

MOTHER TONGUE LANGUAGE	AL 6
------------------------	------

MATHEMATICS	AL A
-------------	------

SCIENCE	AL 5
---------	------

PSLE SCORE: 23



Full Subject-based Banding (Full SBB)



Subjects offered under SBB(Sec)	Eligibility criteria		
	PSLE subject level	PSLE AL for the specific subject	Option to take the Secondary One subject at:
English Language Mother Tongue Languages Mathematics Science	Standard	AL 5 or better	G3 or G2
		AL 6	G2
	Foundation	AL A	G2

Full Subject-based Banding (Full SBB)



All secondary school students can offer **English Language, Mother Tongue Languages, Mathematics and Science** at a more demanding level from the start of Secondary One based on students' PSLE Achievement Level (AL) for each subject.

Peter



ENGLISH LANGUAGE AL 6

G2

MOTHER TONGUE LANGUAGE AL 6

G2

MATHEMATICS AL A

G2

SCIENCE AL 5

G3

PSLE SCORE: 23





Direct School Admission (DSA) for Secondary Schools



Direct School Admission (DSA-Sec)

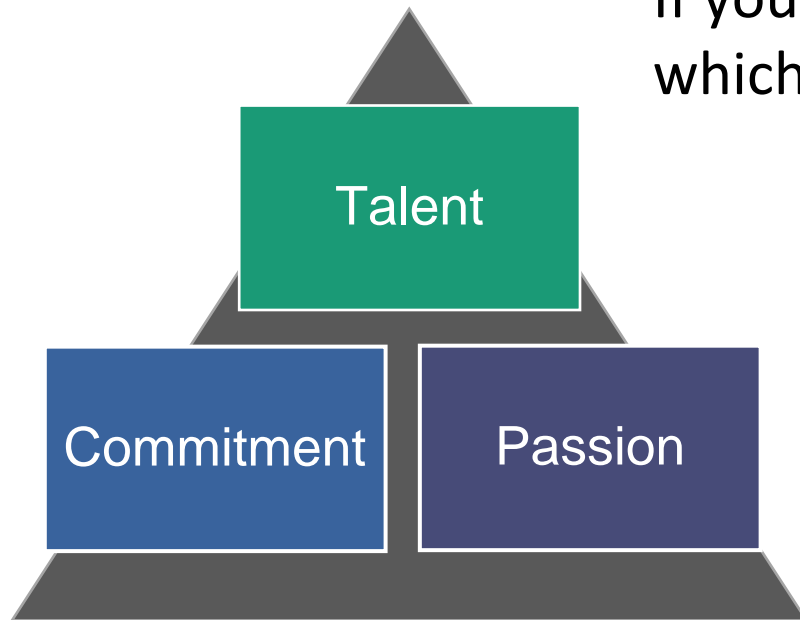


- To encourage different **peaks of excellence**
- Students apply based on their **talent in sports, CCAs and specific academic areas.**
- If your child is admitted to a secondary school through DSA-Sec, they are **not allowed** to:
 - Submit school choices during the Secondary 1 (S1) posting process.
 - Transfer to another school. They must commit to their chosen school for the duration of the programme.





Is the DSA-Sec right for my child?



If your child has specific **talents** which a school offers the DSA-Sec in

And is **passionate** about and **committed** to developing his/her strengths and interests

DSA-Sec can support his/her development in that talent area.

Direct School Admission (DSA-Sec)



- The selection process differs across schools, and across different DSA-Sec categories.
- Generally, schools are looking for candidates with:

Talent, passion, commitment

- Schools may look at **achievements** and **participation** (e.g. in Junior Sports Academy).
- Schools may also conduct tests, trials or selection camps to identify students with **strengths, or sound fundamentals and potential**, in particular areas.

Strong personal qualities

- Schools may look at CCA records and VIA participation.
- Schools may also conduct interviews.

Good academic fit

- Schools may look at primary school results to ensure students can benefit from the school's pace of learning.

Direct School Admission (DSA-Sec)



Examples of Possible Choice Combinations

EXAMPLE 1	Talent(s)	School(s)	Your child can apply to <u>up to three different schools</u> , with no restrictions on the talent areas.
	Choir	School A	
	Choir	School B	
	Choir	School C	
EXAMPLE 2	Talent(s)	School(s)	If your child chooses two areas in one school, he/she can apply to two different schools only ,
	Choir	School A	
	String Orchestra	School A	
	Choir	School B	
EXAMPLE 3 (Not allowed)	Talent(s)	School(s)	Your child cannot use all three choices on one school. He/she can leave the third choice blank or choose another school.
	Choir	School A	
	String Orchestra	School A	
	Mathematics	School A	



How to apply

- Students can apply online through the centralised DSA-Sec portal.
- Key periods (**Tentative**):
 - **Jan to May**: Explore school choices
 - **May to June**: Apply on DSA-Sec portal
 - **By Sep**: Attend interviews or auditions
 - **End Oct**: Select up to 3 school choices in order of preference using DSA-Sec portal
 - **Nov**: Receive school allocation results along with PSLE results





How to apply

- Relevant primary school information will be shared directly with the secondary schools that students are applying for
- Testimonial from primary school is not required
- Relevant activities and achievements **outside school** can be shared during the online application



Preparing for Secondary School



SECONDARY SCHOOL EDUCATION



Guiding Your Child in the Next Phase of Learning



- More subjects to study
- Longer school hours and vibrant school experiences
- Personalised Digital Learning Programme (PDLP)
- Accorded greater autonomy to make decisions



Preparing for Secondary School

START NOW



- Help your child discover his/her interests and strengths
- Provide opportunities for your child to practice independence and responsibility
- Establish clear expectations
- Inculcate good habits, skills and routines
 - Learning habits
 - Usage of digital devices and Cyberwellness
 - Time management





What can you do as a parent?

1. SUPERVISE

Look out for signs of distress, and monitor your child's progress.

2. PROVIDE

Know your child's needs and be present.

3. ROLE MODEL

Role model resilient behaviour and positive mindsets in everyday situations.

4. REASSURE

Encourage your child regularly.

Supporting your child



Remember to:



Cherish your child and his or her growth through this experience

Your child's worth is not measured by his or her academic performance.

The PSLE is just one of many milestones to understand how much our children have learnt and to gauge their learning needs for the next step of their journey.

There will be more opportunities for your child to continue to flourish in secondary school and beyond.



Be a P.S.L.E parent –

Proactive, Supportive, Loving and Empowering!



FIND OUT MORE ON THE PSLE-FSBB MICROSITE!



<https://www.moe.gov.sg/microsites/psle-fsbb/psle/main.html>



Useful Resources



1 SchoolFinder Tool

SCHOOL
FINDER



<https://go.gov.sg/ecschoolfinder>

2 "Welcome to Secondary School" video



<https://go.gov.sg/welcome-to-secondary-school>

3 Secondary School Education Booklet



<https://go.gov.sg/psle-sec-sch-brochure>

4 ECG Parent Guide



<https://go.gov.sg/parent-guide>



Useful Resources



- **MOE DSA Website:**
<https://www.moe.gov.sg/secondary/dsa/>
- **My SkillsFuture for Primary School students:**
<https://www.myskillsfuture.gov.sg/content/student/en/primary/about/myskillsfuture-for-students.html>



Thank You!



EST. 1938



Questions?



Please key in questions that you have using the QR code.

<https://forms.gle/3uae8djs7Mv1ZGAc8>



Channels of Communication



- ❑ **Parents Gateway**
- ❑ Termly newsletter
- ❑ School calendar
- ❑ Student Handbook
- ❑ School website: <http://dazhongpri.moe.edu.sg/>
- ❑ Telephone: 6565 8002
- ❑ School email: dazhong_ps@moe.edu.sg
- ❑ Teacher's email address (found on school website)
- ❑ YH email address: Lin_Shihua@moe.edu.sg
- ❑ Parent-Teacher Meetings

